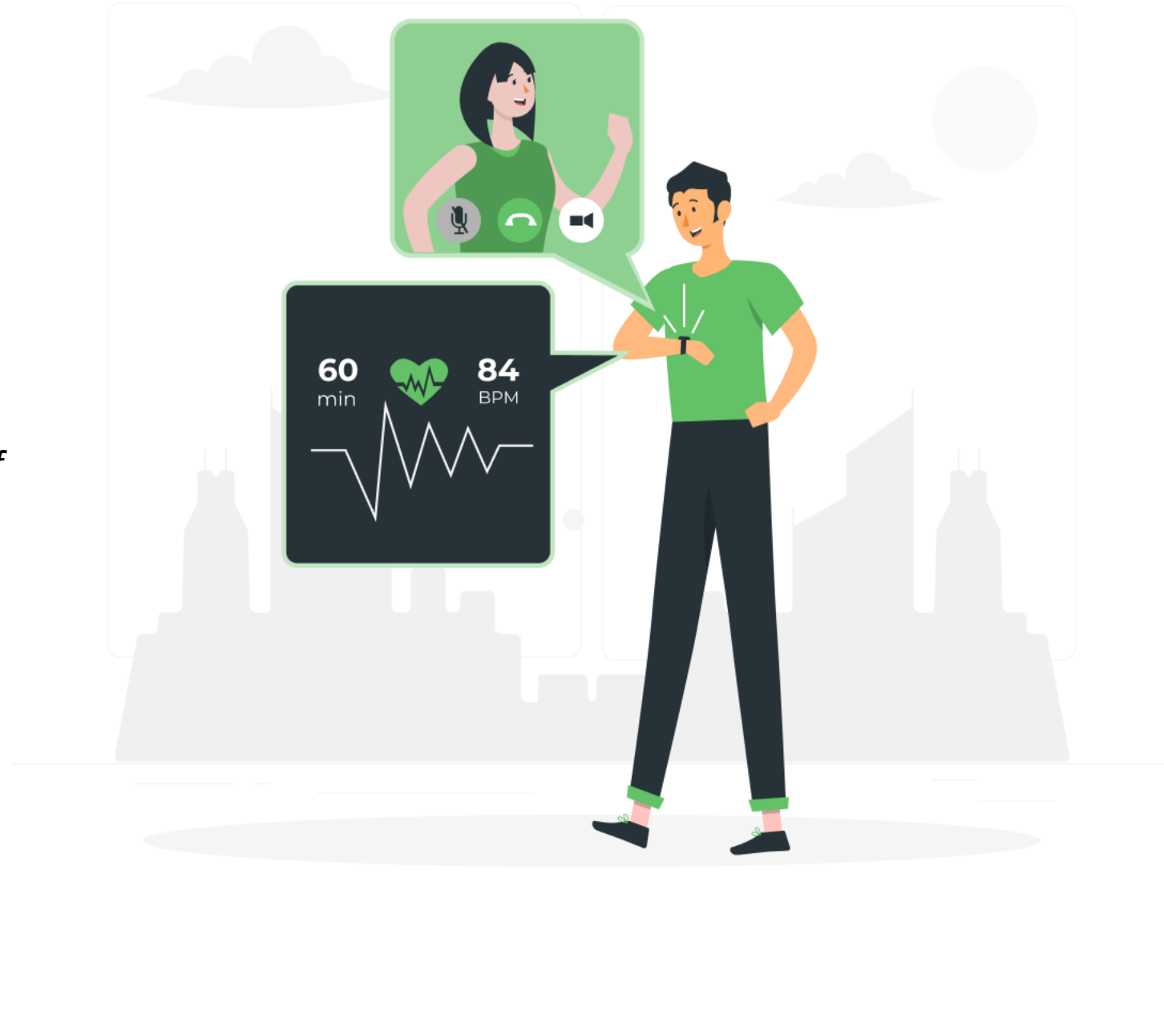


# LifeTrace

*Wise Steps, Healthy Traces, Loyal Friend of the Elderly!*



# Background



Elderly Growth

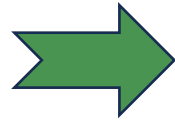
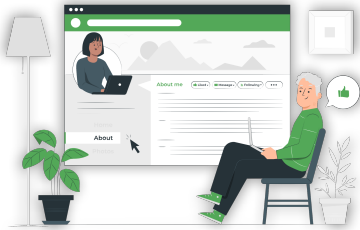


Health Monitoring



Emergency response

# Why



***Ease of Use:*** Elderly-friendly design for a comfortable user experience.

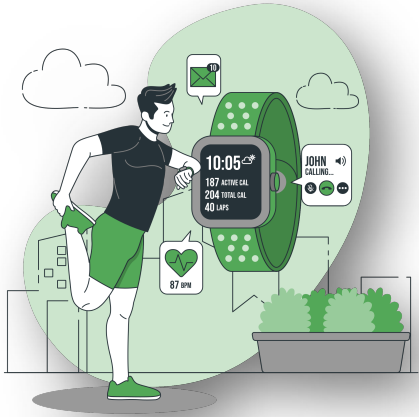


***Improve Quality of Life:*** Provide better health monitoring, improve the quality of life of the elderly.



***Self-Reliance and Security:*** Quick response to emergencies, providing a sense of protection and self-sufficiency

# LifeTrace



## Elderly SmartWatch:

A modern solution to meet health and safety needs.



## Highlighted Features:

Heart rate monitoring, blood pressure and automatic fall detection.

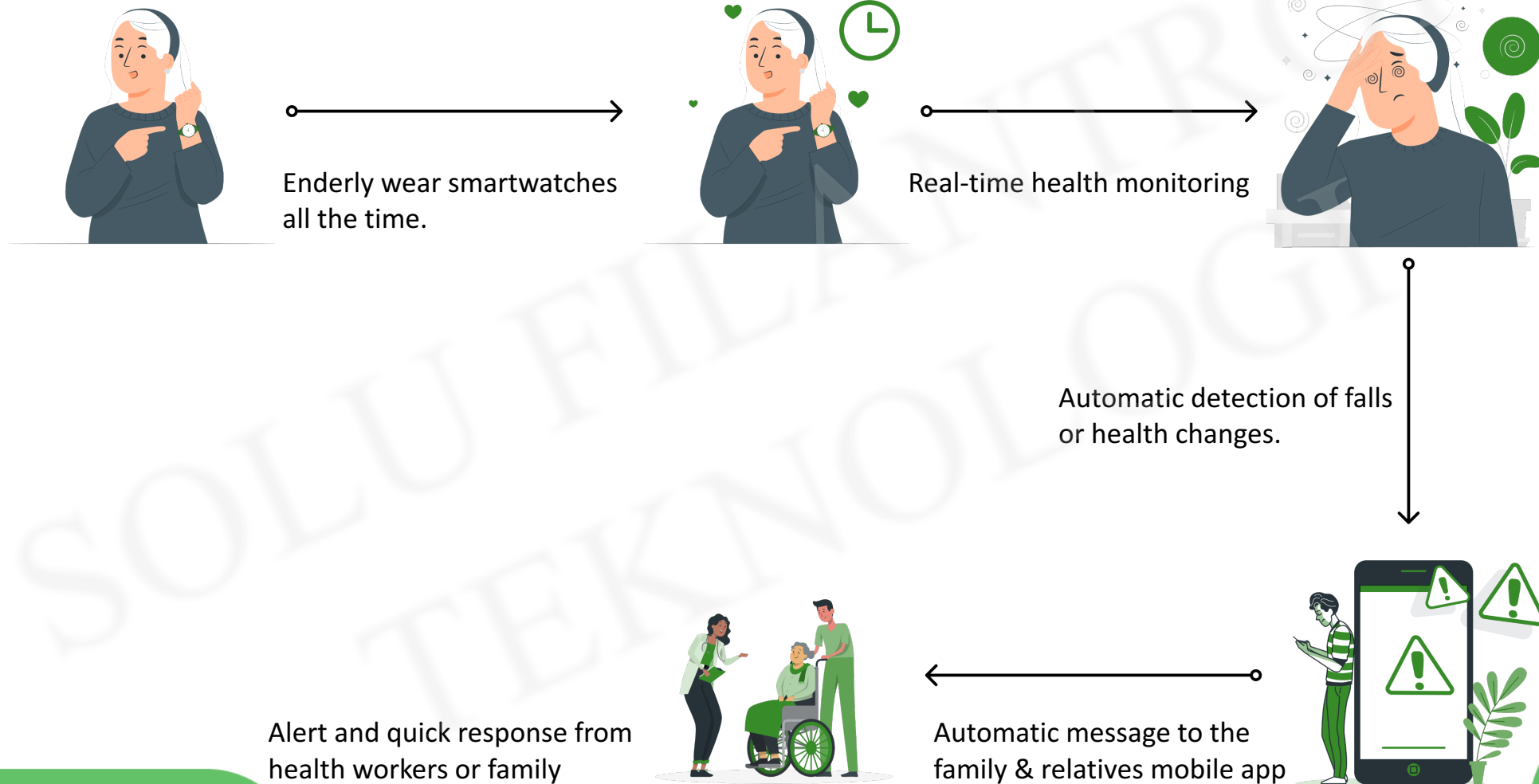


## Health App Integration:

Enables real-time health monitoring.



# How?



# Benefit



## ***Not Using LifeTrace***

### ***1. Limited Health Monitoring:***

Health monitoring is limited and can reduce the ability to detect health changes early.

### ***2. Delayed Emergency Response:***

Reliance on human assistance or traditional devices can delay response to emergency situations

### ***3. Dependency on traditional Devices:***

Without smartwatches, elderly may rely on traditional devices or human assistance to monitor their health

## ***Using LifeTrace***

### ***1. Continuous Health Monitoring:***

Provides real-time health monitoring, including heart rate, enabling early detection of health problems.

### ***2. Fall Detection and Fast response:***

Automatically detects falls and provides rapid response, providing additional safety for elderly

### ***3. Ease of Use:***

The elderly friendly design and simple user interface make the smartwatch easy for elderly to use.

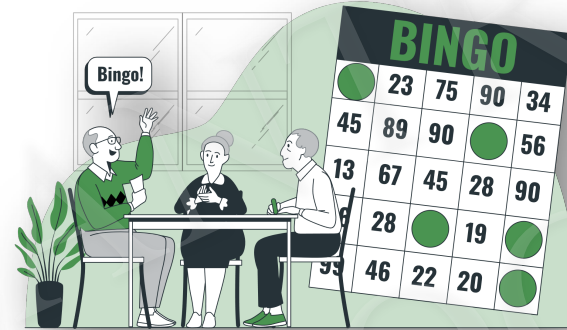
# Potential Industry



Nursing Home



Hajj Umrah pilgrims



Health Facility



House Health Care



# THANK YOU



**E-mail**  
[ammar@solu.co.id](mailto:ammar@solu.co.id)



**Phone Number**  
+62 857-1116-8916



**Website**  
[solu.co.id](http://solu.co.id)